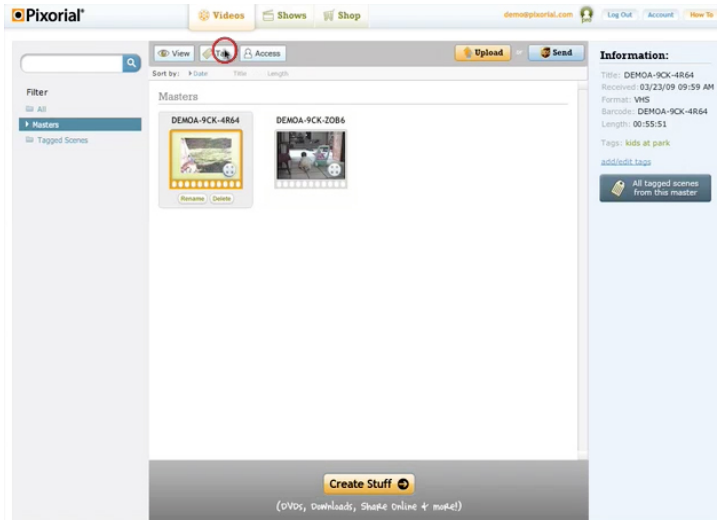
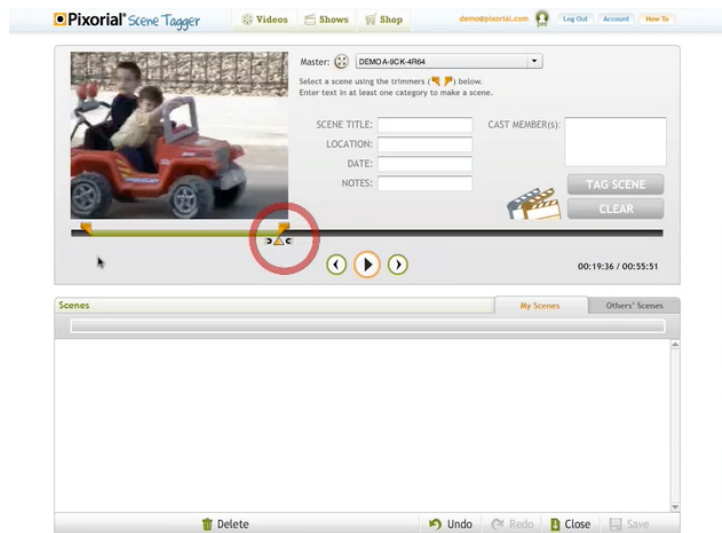


Scene Tagger

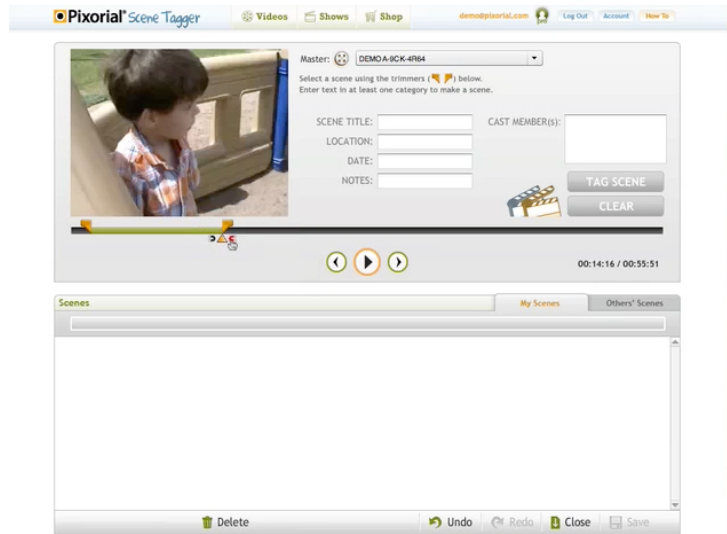
This is a quick overview of Scene Tagger. Use Scene Tagger to label the scenes you would like to use when you create shows in Producer. This is important because the scenes you load in Producer will be shorter, will load quicker than working with the whole master, and will contain the exact content you want to use for your show.



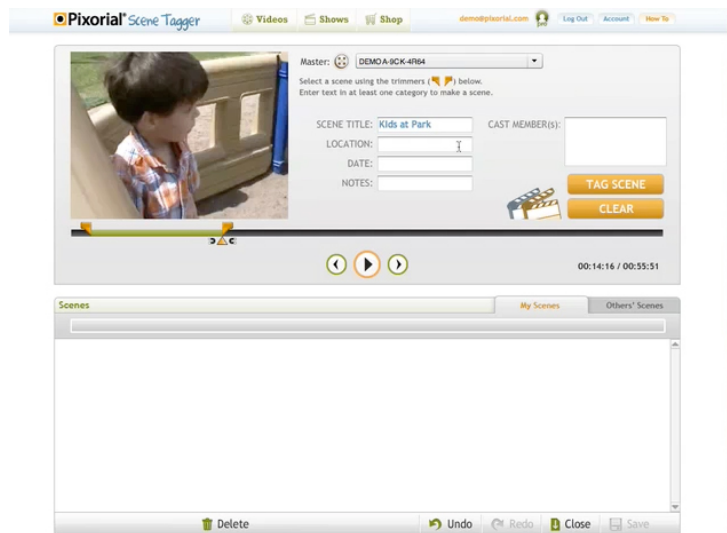
To use Scene Tagger, drag the left and right trimmers to define the start and end of the scene.



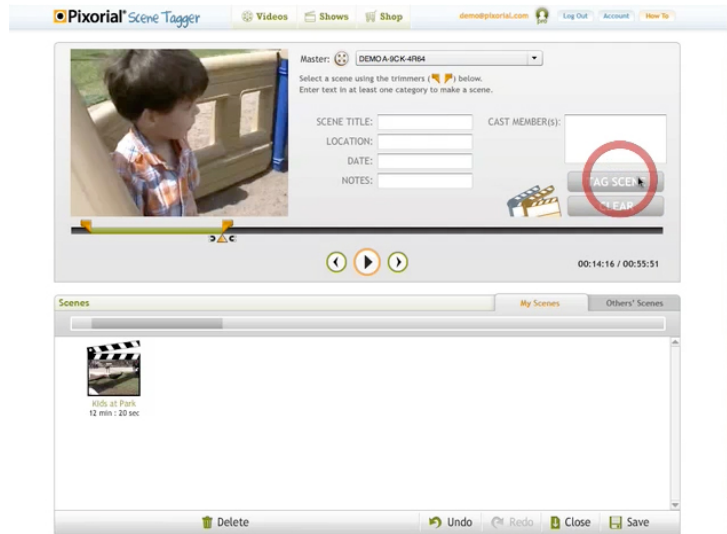
Or you can drag the Playback head to locate a scene, then use the magnets to snap the left or right trimmer into position.



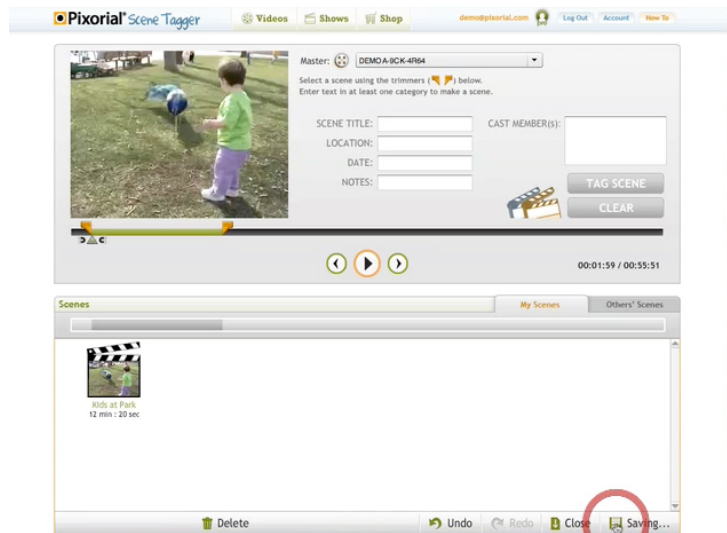
Once defined, enter as much or as little information about the scene as you like. You can enter a title, then optionally, add the location, the date, notes, and who is in the scene.



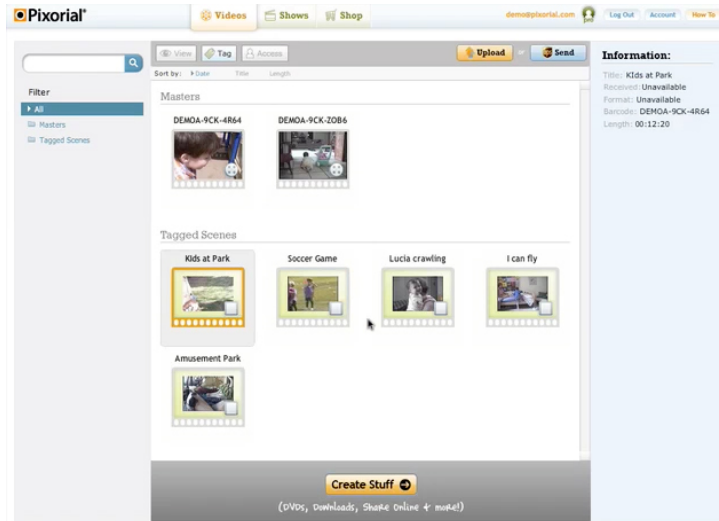
Click “Tag Scene” to create the scene. Note that the start and end points for a scene can be readjusted if needed. If you make a mistake, use the Undo button. You can also delete a tagged scene.



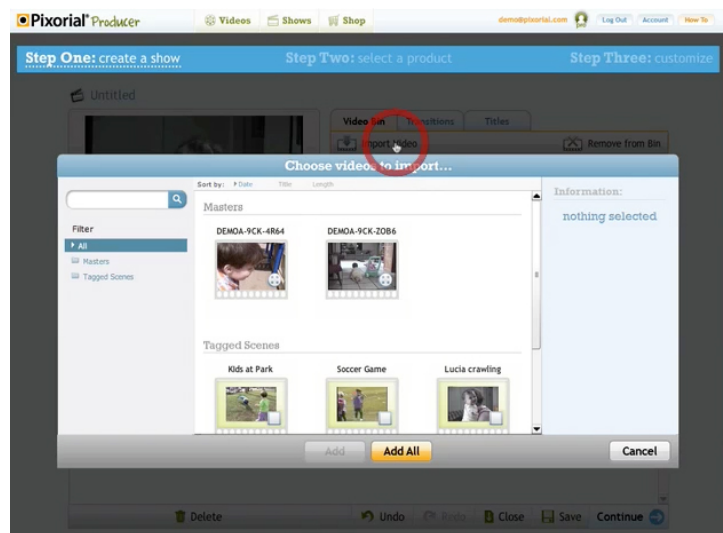
Once you're finished, click Save then Close to exit Scene Tagger.



You can find your tagged scenes under the Videos tab. Click on one or more (by holding down the Control key on a Windows machine or the Command key on a Mac), then click Create Stuff to launch Producer.



One last thing to show you, if you're already in Producer, you can also get to your tagged scenes by clicking the Import Video button. From here, you can either browse to find a scene or do a search.



The search function is very handy if you've created a lot of tagged scenes. For example, if you have a lot of scenes labeled with a person's name, you can quickly find all those scenes in order to compile a fun show that tracks them over the years.

